



Beaufort County Public Works Stormwater Infrastructure Project Summary

Project Summary: Toomer Road/Old Ben Road

Activity: Routine/Preventive Maintenance

Narrative Description of Project:

Duration: 3/20/17 - 4/13/17

Project improved 6,293 L.F. of drainage system. Cleaned out 685 L.F. of channel and 5,452 L.F. of roadside ditch. Installed (1) access pipe. Jetted (1) crossline pipe, (1) access pipe, (29) driveway pipes and 156 L.F. of roadside pipe. Hydroseeded for erosion control.

2017-541/Toomer Rd-Old Ben Rd	Labor Hours	Labor Cost	Equipment Cost	Material Cost	Contracto Cost	Indirect Labor	Total Cost
AUDIT / Audit Project	1.5	\$35.24	\$0.00	\$0.00	\$0.00	\$19.85	\$55.08
CCO / Channel - cleaned out	70.0	\$1,652.40	\$294.93	\$145.80	\$0.00	\$984.90	\$3,078.03
CLPJT / Crossline Pipe - Jetted	14.0	\$311.92	\$60.76	\$34.20	\$0.00	\$200.76	\$607.64
DPJT / Driveway Pipe - Jetted	32.5	\$734.99	\$160.58	\$158.70	\$0.00	\$475.64	\$1,529.91
HAUL / Hauling	177.5	\$3,951.81	\$1,671.58	\$551.04	\$0.00	\$2,558.83	\$8,733.26
HYDR / Hydroseeding	10.0	\$204.60	\$55.32	\$194.77	\$0.00	\$127.20	\$581.89
RSDCL / Roadside Ditch - Cleanout	421.0	\$9,983.14	\$1,917.10	\$510.01	\$0.00	\$5,777.16	\$18,187.41
2017-541/Toomer Rd-Old Ben Rd Sub Total	726.5	\$16,874.10	\$4,160.27	\$1,594.52	\$0.00	\$10,144.33	\$32,773.21
Grand Total	726.5	\$16,874.10	\$4,160.27	\$1,594.52	\$0.00	\$10,144.33	\$32,773.21

Before



During



After





Project: Toomer
Road and Old Ben
Road
Map #1

Activity: Routine/
Preventive
Maintenance

Project #:
2017-541

Township/SW Dist:
St. Helena Island/8

Completed:
April 2017

Legend

Drainage Type

- Access Pipe
- Bleeder Pipe
- Channel Pipe
- Channel
- Stream
- Crossline Pipe
- Driveway Pipe
- Lateral
- Lateral Pipe
- River
- Road Pipe
- Roadside
- Roadside Pipe

0 60 120 240 360 480
Feet

1 inch = 250 feet

Prepared By: BC Stormwater Management Utility

Date Print: 08/01/17

File: C:\project summaries map\Toomer Road and Old Ben Road Map#1_2017-541

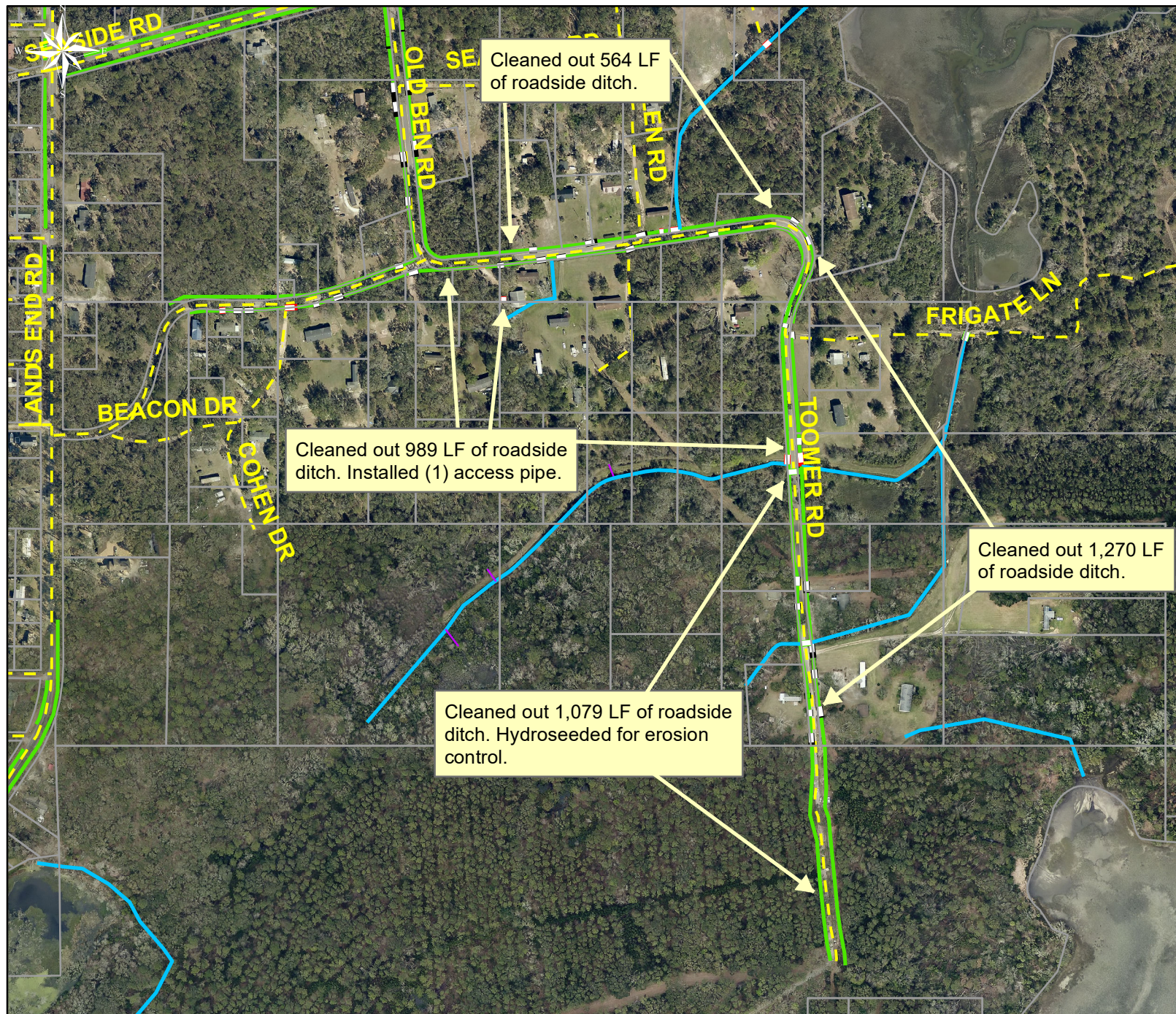
Project: Toomer Road and Old Ben Road
Map #2

Activity: Routine/
Preventive
Maintenance

Project #:
2017-541

Township/SW Dist:
St. Helena Island/8

Completed:
April 2017



Legend

Drainage Type

- Access Pipe
- Bleeder Pipe
- Channel Pipe
- Channel
- Stream
- Crossline Pipe
- Driveway Pipe
- Lateral
- Lateral Pipe
- River
- Road Pipe
- Roadside
- Roadside Pipe

0 100 200 400 600 800
Feet

1 inch = 420 feet

Prepared By: BC Stormwater Management Utility
Date Print: 08/01/17

File: C:\project summaries map\Toomer Road and Old Ben Road Map#2_2017-541

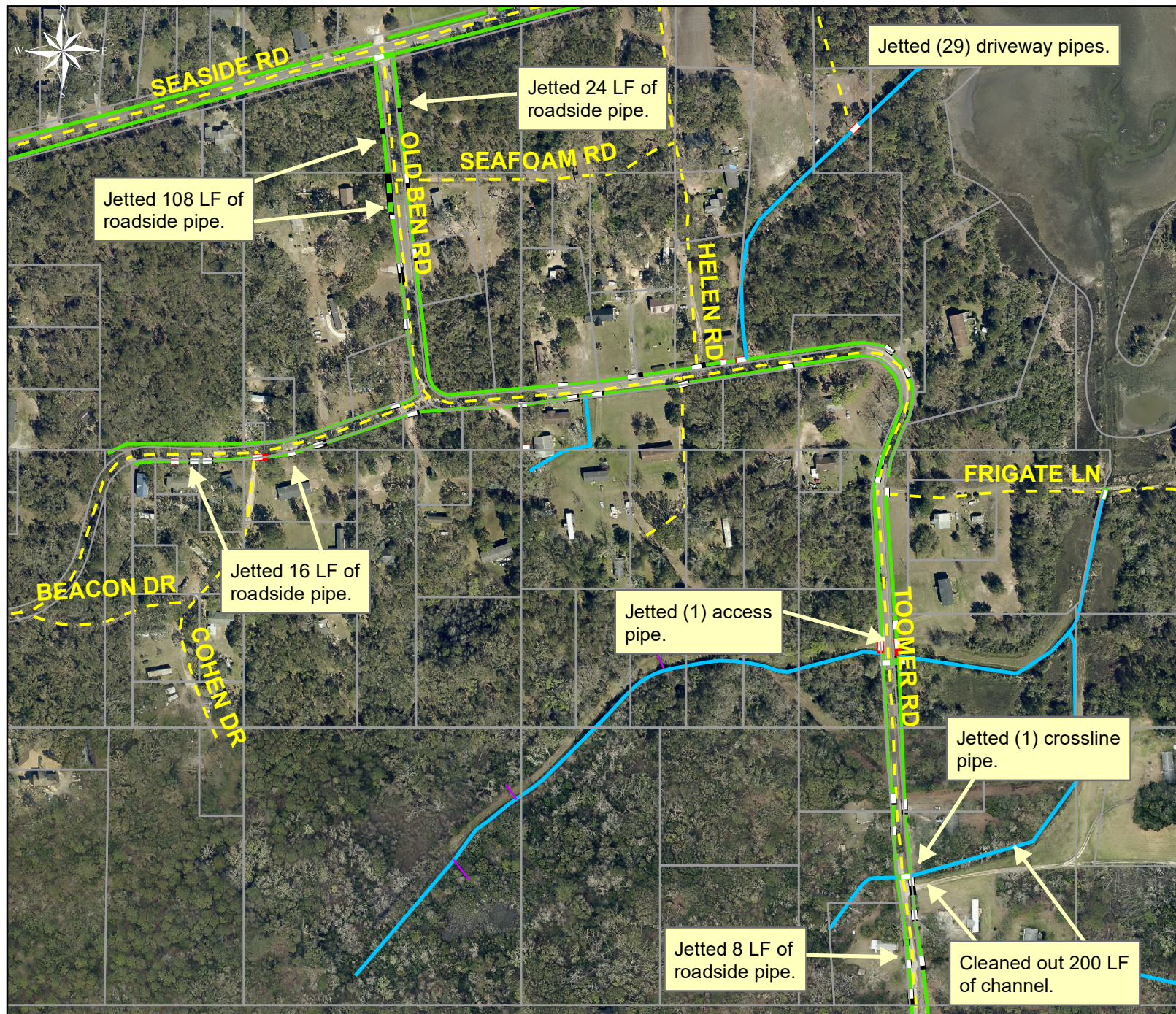
Project: Toomer
Road and Old Ben
Road
Map #3

Activity: Routine/
Preventive
Maintenance

Project #:
2017-541

Township/SW Dist:
St. Helena Island/8

Completed:
April 2017



Legend

Drainage Type

- Access Pipe
- Bleeder Pipe
- Channel Pipe
- Channel
- Stream
- Crossline Pipe
- Driveway Pipe
- Lateral
- Lateral Pipe
- River
- Road Pipe
- Roadside
- Roadside Pipe

0 80 160 320 480 640
Feet

1 inch = 330 feet

Prepared By: BC Stormwater Management Utility

Date Print: 08/01/17

File: C:\project summaries map\Toomer Road and Old Ben Road Map#3_2017-541